

# bott trade conversions



uno3

Pure, simple racking



Robust & durable

Affordable quality

# CONTENTS

	Page
Overview	4 - 5
Crash tested	6 - 7
System parts overview	8 - 11
Standard modules	12 - 13
Modules - Medium vans - Nearside/Left	14 - 17
Modules - Medium vans - Offside/Right	18 - 19
Modules - Large vans - Nearside/Left	20 - 21
Modules - Large vans - Offside/Right	22 - 23
Van racking accessories	24 - 25
Trade team - consultation	26 - 27
Customer services	28 - 29
Floors and linings	30 - 31
Electrical services	32 - 33
Decals	34 - 35
Security	36 - 37





■ work ■ smart ■ bott

# About

With over 90 years of industry experience, Bott Ltd is part of the Bott Group, world leaders in the manufacture and supply of quality van racking systems.

For medium and large vans, bott uno3 provides a safe, robust and affordable alternative to traditional wooden racking systems.

Whatever your trade, a bott uno3 racking solution can help you better organise equipment and improve your efficiency.

bott uno3 has been crash tested to comply with ECE R17 standards - primarily for safety but also for peace of mind.





## Pure, simple racking

A professionally fitted van racking system ensures a safe, reliable, well organised workspace and helps to create a great first impression with customers.

With durable, steel construction and a comprehensive range of features, the bott uno3 system offers quality and functionality, at an affordable price.

With efficient storage and mobile working solutions; such as integrated shelves, removable cases, integral vice and workbench options, a bott uno3 solution can help improve your efficiency - whatever your trade!

- Functional, strong & tough
- Quality with value
- Highest safety standards
- Efficient, mobile working
- Professional & tidy

For more information about bott vehicle conversions and services, visit: [www.bott.com.sg](http://www.bott.com.sg)

Before



After

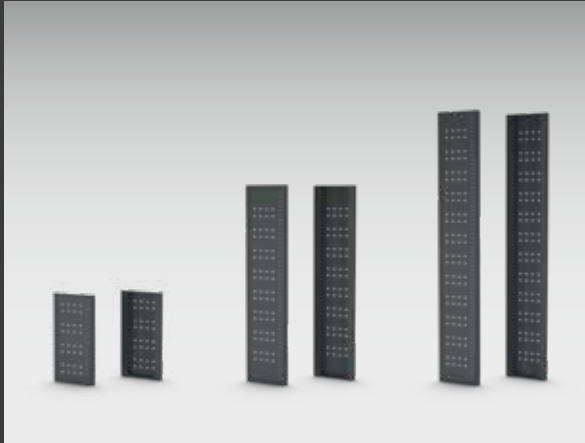




## Crash tested

- bott uno3 racking has been designed with safety at the forefront. Weak, poorly secured racking can be extremely dangerous, even at low speed impacts.
- bott uno3 racking is crash tested to ECE R17 standards. The crash test simulates the collision of the vehicle with an obstacle at a speed of 50km/h. Independent experts conduct the tests with a fully-loaded vehicle. The load on the components are equivalent to those experienced during a traffic accident.
- The tests particularly focus on the fixing points to the bodywork, the floor and the side walls of the vehicle, as well as the overall construction of the van racking.
- We also pay close attention to all moving parts. The system is designed to keep tool cases and storage boxes firmly in place during transit and optional extras such as anti-slip mats and lashing straps, help prevent loads from sliding around.

# System parts overview



## Perforated end frames

Strong, 1.4mm thick steel end frames with reinforced folds, form the backbone of the bott uno3 system.



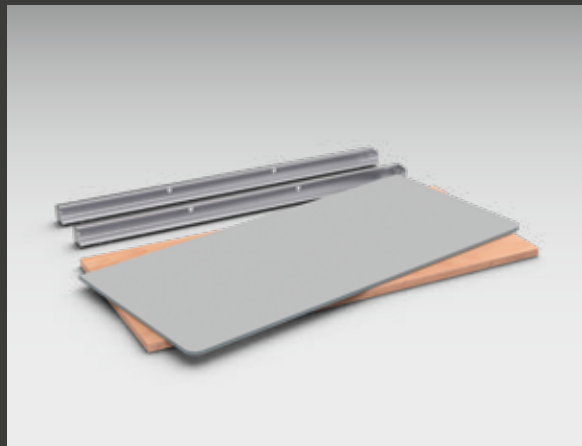
## Low front shelf

Formed from 0.8mm galvanised sheet steel, our low front shelves are designed to securely hold removable cases & equipment.



## Basic shelf

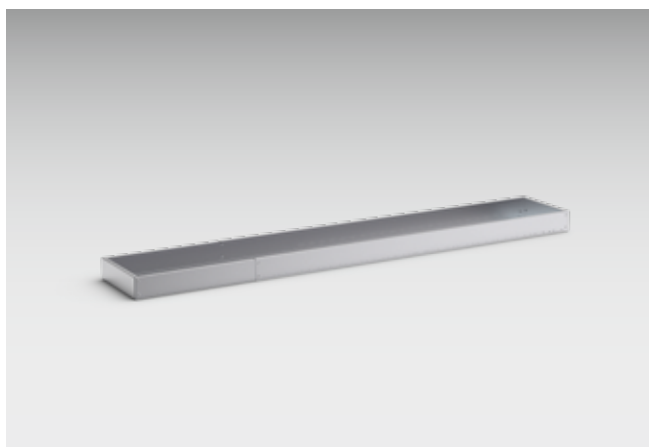
Formed from 0.8mm galvanised sheet steel, the robust basic shelf is designed for the quick and safe storage of varying sized materials and equipment.



## Worktop

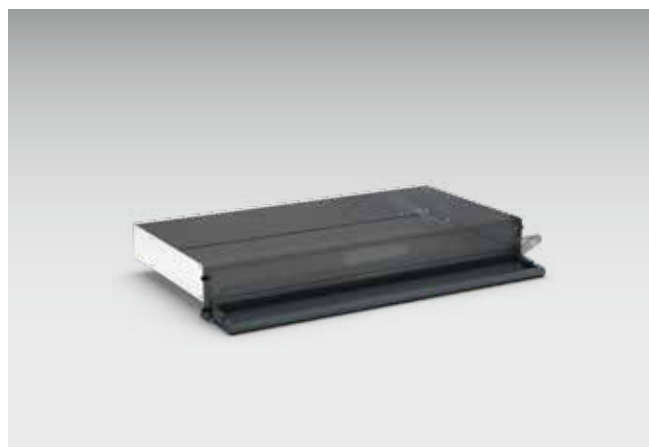
Installed on top of the bott uno3 module, an optional built-in worktop allows you to create a practical workbench.





### Long item top tray

The long item top tray provides the perfect storage solution for longer items such as pipes and conduits. Formed from 0.8mm galvanised sheet steel.



### Drop front feature

The optional drop front feature is designed to keep items safely stowed during transit.



### Locker

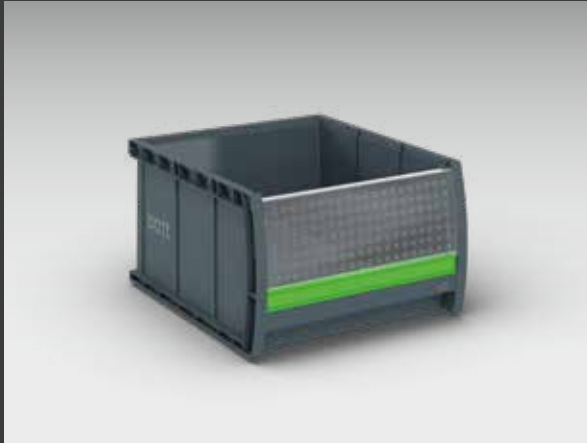
Locker door and back panel formed from 0.8mm galvanised steel with reinforced corners, the locker door is strong and robust to withstand everyday use.



### Systainer<sup>3</sup>

bott uno3 racking has been specifically designed to hold the new Systainer<sup>3</sup> generation of cases, with simple integration via dedicated side rails.

# System parts overview



## bottBox

Robust and durable, the award winning bottBox systematically organises small parts & consumables.



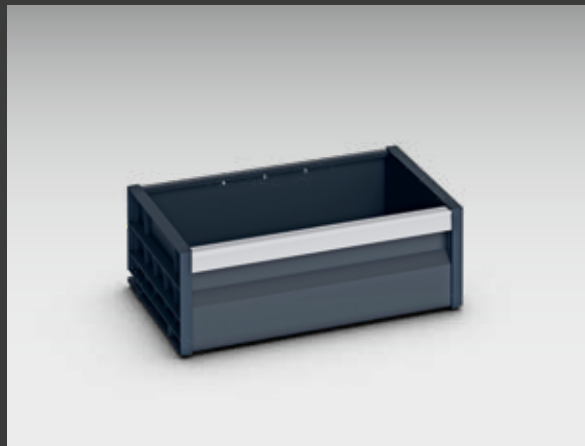
## Eurobox

Heavy-duty plastic storage bins, with modular stackable design, offering maximum volume with excellent strength.



## Organizer

Transparent lid allows contents to be visible, enabling you to find the right nuts, bolts and screws in no time.



## varioSlide

bott varioSlide can be removed using plastic guide rails, providing a transportable drawer within the racking system.







## Standard modules

- The bott uno3 system is manufactured to the highest quality, at our own ISO certified plant in the UK.
- Modules are constructed from strong galvanised and powder-coated steels and designed to store a wide range of high-capacity storage accessories.
- Various sized modules available - dependent on vehicle make and model.

# Modules - Medium vans - Nearside/Left

## Module - ML1



- 1 x Basic shelf
- 3 x Low front shelf
- Fixing bracket set

## Module - ML2



- 1 x Basic shelf
- 3 x Drop front shelf
- Fixing bracket set

Manufacturer	Model	Vehicle length	Module size (mm)	Module - ML1	Module - ML2
Citroen / Fiat / Peugeot / Toyota / Vauxhall	Dispatch (2016) / Scudo (2022) / Expert (2016) / Proace (2016) / Vivaro (2019)	M / Standard / Standard / Medium / L1	926 x 360 x 1100	<b>19526150.19V</b>	<b>19526151.19V</b>
Ford	Custom (2012)	L1	1038 x 360 x 1100	<b>19526200.19V</b>	<b>19526201.19V</b>
Mercedes	Vito (2014)	Long	1038 x 360 x 1100	<b>19526200.19V</b>	<b>19526201.19V</b>
Renault	Trafic (2014)	S	1038 x 360 x 1100	<b>19526200.19V</b>	<b>19526201.19V</b>
Nissan	NV300 (Primastar) (2016)	L1	1038 x 360 x 1100	<b>19526200.19V</b>	<b>19526201.19V</b>
VW	Transporter (2015)	SWB	1038 x 360 x 1100	<b>19526200.19V</b>	<b>19526201.19V</b>
Citroen / Fiat / Peugeot / Toyota / Vauxhall	Dispatch (2016) / Scudo (2022) / Expert (2016) / Proace (2016) / Vivaro (2019)	XL / Maxi / Long / Long / L2	1150 x 360 x 1100	<b>19526350.19V</b>	<b>19526351.19V</b>
Ford	Custom (2012)	L2	1150 x 360 x 1100	<b>19526300.19V</b>	<b>19526301.19V</b>
Mercedes	Vito (2014)	Extra Long	1150 x 360 x 1100	<b>19526300.19V</b>	<b>19526301.19V</b>
Renault	Trafic (2014)	L	1150 x 360 x 1100	<b>19526300.19V</b>	<b>19526301.19V</b>
Nissan	NV300 (Primastar) (2016)	L2	1150 x 360 x 1100	<b>19526300.19V</b>	<b>19526301.19V</b>
VW	Transporter (2015)	LWB	1150 x 360 x 1100	<b>19526300.19V</b>	<b>19526301.19V</b>

# Modules - Medium vans - Nearside/Left

## Module - ML3



- 1 x Basic shelf
- 1 x Locker
- 1 x bott SYS3 Organizer M 89
- 1 x bott Systainer<sup>3</sup> SYS3 M 137
- 1 x bott Systainer<sup>3</sup> SYS3 M 187
- Fixing bracket set

## Module - ML4



- 1 x Basic shelf
- 1 x Locker
- 2 x varioSlide-L with Anti-Slip Mat 4-3
- Fixing bracket set

Manufacturer	Model	Vehicle length	Module size (mm)	Module - ML3	Module - ML4
Citroen / Fiat / Peugeot / Toyota / Vauxhall	Dispatch (2016) / Scudo (2022) / Expert (2016) / Proace (2016) / Vivaro (2019)	M / Standard / Standard / Medium / L1	926 x 360 x 1100	<b>19526152.19V</b>	<b>19526153.19V</b>
Ford	Custom (2012)	L1	1038 x 360 x 1100	<b>19526202.19V</b>	<b>19526203.19V</b>
Mercedes	Vito (2014)	Long	1038 x 360 x 1100	<b>19526202.19V</b>	<b>19526203.19V</b>
Renault	Trafic (2014)	S	1038 x 360 x 1100	<b>19526202.19V</b>	<b>19526203.19V</b>
Nissan	NV300 (Primastar) (2016)	L1	1038 x 360 x 1100	<b>19526202.19V</b>	<b>19526203.19V</b>
VW	Transporter (2015)	SWB	1038 x 360 x 1100	<b>19526202.19V</b>	<b>19526203.19V</b>
Citroen / Fiat / Peugeot / Toyota / Vauxhall	Dispatch (2016) / Scudo (2022) / Expert (2016) / Proace (2016) / Vivaro (2019)	XL / Maxi / Long / Long / L2	1150 x 360 x 1100	<b>19526352.19V</b>	<b>19526353.19V</b>
Ford	Custom (2012)	L2	1150 x 360 x 1100	<b>19526302.19V</b>	<b>19526303.19V</b>
Mercedes	Vito (2014)	Extra Long	1150 x 360 x 1100	<b>19526302.19V</b>	<b>19526303.19V</b>
Renault	Trafic (2014)	L	1150 x 360 x 1100	<b>19526302.19V</b>	<b>19526303.19V</b>
Nissan	NV300 (Primastar) (2016)	L2	1150 x 360 x 1100	<b>19526302.19V</b>	<b>19526303.19V</b>
VW	Transporter (2015)	LWB	1150 x 360 x 1100	<b>19526302.19V</b>	<b>19526303.19V</b>

# Modules - Medium vans - Nearside/Left

## Module - ML5



- 1 x Basic shelf
- 2 x varioSlide-L with Anti-Slip Mat 8-3
- Fixing bracket set

## Module - ML6



- 1 x Basic shelf
- 4 x varioSlide-L with Anti-Slip Mat 4-3
- Fixing bracket set

Manufacturer	Model	Vehicle length	Module size (mm)	Module - ML5	Module - ML6
Citroen / Fiat / Peugeot / Toyota / Vauxhall	Dispatch (2016) / Scudo (2022) / Expert (2016) / Proace (2016) / Vivaro (2019)	M / Standard / Standard / Medium / L1	926 x 360 x 1100	<b>19526154.19V</b>	<b>19526155.19V</b>
Ford	Custom (2012)	L1	1038 x 360 x 1100	<b>19526204.19V</b>	<b>19526205.19V</b>
Mercedes	Vito (2014)	Long	1038 x 360 x 1100	<b>19526204.19V</b>	<b>19526205.19V</b>
Renault	Trafic (2014)	S	1038 x 360 x 1100	<b>19526204.19V</b>	<b>19526205.19V</b>
Nissan	NV300 (Primastar) (2016)	L1	1038 x 360 x 1100	<b>19526204.19V</b>	<b>19526205.19V</b>
VW	Transporter (2015)	SWB	1038 x 360 x 1100	<b>19526204.19V</b>	<b>19526205.19V</b>
Citroen / Fiat / Peugeot / Toyota / Vauxhall	Dispatch (2016) / Scudo (2022) / Expert (2016) / Proace (2016) / Vivaro (2019)	XL / Maxi / Long / Long / L2	1150 x 360 x 1100	<b>19526354.19V</b>	<b>19526355.19V</b>
Ford	Custom (2012)	L2	1150 x 360 x 1100	<b>19526304.19V</b>	<b>19526305.19V</b>
Mercedes	Vito (2014)	Extra Long	1150 x 360 x 1100	<b>19526304.19V</b>	<b>19526305.19V</b>
Renault	Trafic (2014)	L	1150 x 360 x 1100	<b>19526304.19V</b>	<b>19526305.19V</b>
Nissan	NV300 (Primastar) (2016)	L2	1150 x 360 x 1100	<b>19526304.19V</b>	<b>19526305.19V</b>
VW	Transporter (2015)	LWB	1150 x 360 x 1100	<b>19526304.19V</b>	<b>19526305.19V</b>



# Modules - Medium vans - Nearside/Left

## Module - ML7



- 1 x Basic shelf
- 2 x bott SYS3 Organizer M 89
- 2 x bott Systainer<sup>3</sup> SYS3 M 137
- 2 x bott Systainer<sup>3</sup> SYS3 M 187
- Fixing bracket set

## Module - ML8

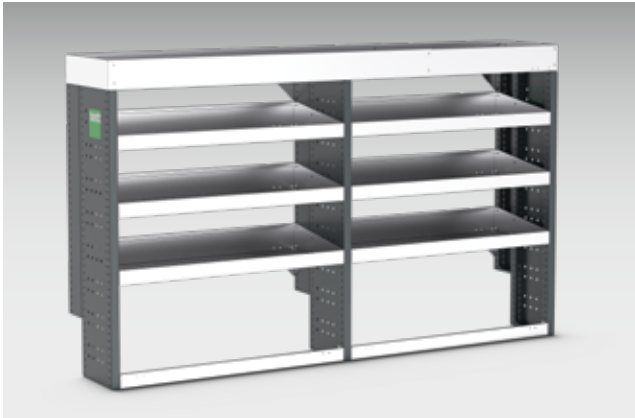


- 1 x Worktop
- 4 x varioSlide-L with Anti-Slip Mat 4-3
- Fixing bracket set

Manufacturer	Model	Vehicle length	Module - ML7 size (mm)	Module - ML7	Module - ML8 size (mm)	Module - ML8
Citroen / Fiat / Peugeot / Toyota / Vauxhall	Dispatch (2016) / Scudo (2022) / Expert (2016) / Proace (2016) / Vivaro (2019)	M / Standard / Standard / Medium / L1	926 x 360 x 1100	<b>19526156.19V</b>	926 x 360 x 900	<b>19526157.19V</b>
Ford	Custom (2012)	L1	1038 x 360 x 1100	<b>19526206.19V</b>	1038 x 360 x 900	<b>19526207.19V</b>
Mercedes	Vito (2014)	Long	1038 x 360 x 1100	<b>19526206.19V</b>	1038 x 360 x 900	<b>19526207.19V</b>
Renault	Trafic (2014)	S	1038 x 360 x 1100	<b>19526206.19V</b>	1038 x 360 x 900	<b>19526207.19V</b>
Nissan	NV300 (Primastar) (2016)	L1	1038 x 360 x 1100	<b>19526206.19V</b>	1038 x 360 x 900	<b>19526207.19V</b>
VW	Transporter (2015)	SWB	1038 x 360 x 1100	<b>19526206.19V</b>	1038 x 360 x 900	<b>19526207.19V</b>
Citroen / Fiat / Peugeot / Toyota / Vauxhall	Dispatch (2016) / Scudo (2022) / Expert (2016) / Proace (2016) / Vivaro (2019)	XL / Maxi / Long / Long / L2	1150 x 360 x 1100	<b>19526356.19V</b>	1150 x 360 x 900	<b>19526357.19V</b>
Ford	Custom (2012)	L2	1150 x 360 x 1100	<b>19526306.19V</b>	1150 x 360 x 900	<b>19526307.19V</b>
Mercedes	Vito (2014)	Extra Long	1150 x 360 x 1100	<b>19526306.19V</b>	1150 x 360 x 900	<b>19526307.19V</b>
Renault	Trafic (2014)	L	1150 x 360 x 1100	<b>19526306.19V</b>	1150 x 360 x 900	<b>19526307.19V</b>
Nissan	NV300 (Primastar) (2016)	L2	1150 x 360 x 1100	<b>19526306.19V</b>	1150 x 360 x 900	<b>19526307.19V</b>
VW	Transporter (2015)	LWB	1150 x 360 x 1100	<b>19526306.19V</b>	1150 x 360 x 900	<b>19526307.19V</b>

# Modules - Medium vans - Offside/Right

## Module - MR1



- 1 x Top tray
- 6 x Low front shelf
- Fixing bracket set

## Module - MR2



- 1 x Top tray
- 6 x Drop front shelf
- Fixing bracket set

Manufacturer	Model	Vehicle length	Module size (mm)	Module - MR1	Module - MR2
Citroen / Fiat / Peugeot / Toyota / Vauxhall	Dispatch (2016) / Scudo (2022) / Expert (2016) / Proace (2016) / Vivaro (2019)	M / Standard / Standard / Medium / L1	1822 x 360 x 1100	<b>19528100.19V</b>	<b>19528101.19V</b>
Ford	Custom (2012)	L1	2046 x 360 x 1100	<b>19528300.19V</b>	<b>19528301.19V</b>
Mercedes	Vito (2014)	Long	2046 x 360 x 1100	<b>19528300.19V</b>	<b>19528301.19V</b>
Renault	Trafic (2014)	S	1934 x 360 x 1100	<b>19528200.19V</b>	<b>19528201.19V</b>
Nissan	NV300 (Primastar) (2016)	L1	1934 x 360 x 1100	<b>19528200.19V</b>	<b>19528201.19V</b>
VW	Transporter (2015)	SWB	1934 x 360 x 1100	<b>19528200.19V</b>	<b>19528201.19V</b>
Citroen / Fiat / Peugeot / Toyota / Vauxhall	Dispatch (2016) / Scudo (2022) / Expert (2016) / Proace (2016) / Vivaro (2019)	XL / Maxi / Long / Long / L2	2158 x 360 x 1100	<b>19528400.19V</b>	<b>19528401.19V</b>
Ford	Custom (2012)	L2	2382 x 360 x 1100	<b>19528500.19V</b>	<b>19528501.19V</b>
Mercedes	Vito (2014)	Extra Long	2158 x 360 x 1100	<b>19528450.19V</b>	<b>19528451.19V</b>
Renault	Trafic (2014)	L	2382 x 360 x 1100	<b>19528500.19V</b>	<b>19528501.19V</b>
Nissan	NV300 (Primastar) (2016)	L2	2382 x 360 x 1100	<b>19528500.19V</b>	<b>19528501.19V</b>
VW	Transporter (2015)	LWB	2382 x 360 x 1100	<b>19528500.19V</b>	<b>19528501.19V</b>

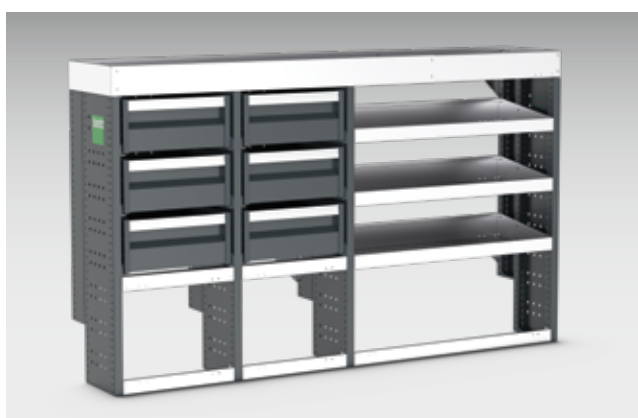
# Modules - Medium vans - Offside/Right

## Module - MR3



- 1 x Top tray
- 3 x Low front shelf
- 2 x bott SYS3 Organizer M 89
- 4 x bott Systainer<sup>3</sup> SYS3 M 137
- 2 x bott Systainer<sup>3</sup> SYS3 M 187
- Fixing bracket set

## Module - MR4



- 1 x Top tray
- 3 x Low front shelf
- 6 x varioSlide-L with Anti-Slip Mat 4-3
- Fixing bracket set

Manufacturer	Model	Vehicle length	Module size (mm)	Module - MR3	Module - MR4
Citroen / Fiat / Peugeot / Toyota / Vauxhall	Dispatch (2016) / Scudo (2022) / Expert (2016) / Proace (2016) / Vivaro (2019)	M / Standard / Standard / Medium / L1	1822 x 360 x 1100	<b>19528102.19V</b>	<b>19528103.19V</b>
Ford	Custom (2012)	L1	2046 x 360 x 1100	<b>19528302.19V</b>	<b>19528303.19V</b>
Mercedes	Vito (2014)	Long	2046 x 360 x 1100	<b>19528302.19V</b>	<b>19528303.19V</b>
Renault	Trafic (2014)	S	1934 x 360 x 1100	<b>19528202.19V</b>	<b>19528203.19V</b>
Nissan	NV300 (Primastar) (2016)	L1	1934 x 360 x 1100	<b>19528202.19V</b>	<b>19528203.19V</b>
VW	Transporter (2015)	SWB	1934 x 360 x 1100	<b>19528202.19V</b>	<b>19528203.19V</b>
Citroen / Fiat / Peugeot / Toyota / Vauxhall	Dispatch (2016) / Scudo (2022) / Expert (2016) / Proace (2016) / Vivaro (2019)	XL / Maxi / Long / Long / L2	2158 x 360 x 1100	<b>19528402.19V</b>	<b>19528403.19V</b>
Ford	Custom (2012)	L2	2382 x 360 x 1100	<b>19528502.19V</b>	<b>19528503.19V</b>
Mercedes	Vito (2014)	Extra Long	2158 x 360 x 1100	<b>19528452.19V</b>	<b>19528453.19V</b>
Renault	Trafic (2014)	L	2382 x 360 x 1100	<b>19528502.19V</b>	<b>19528503.19V</b>
Nissan	NV300 (Primastar) (2016)	L2	2382 x 360 x 1100	<b>19528502.19V</b>	<b>19528503.19V</b>
VW	Transporter (2015)	LWB	2382 x 360 x 1100	<b>19528502.19V</b>	<b>19528503.19V</b>

# Modules - Large vans - Nearside/Left

## Module - LL1



- 1 x Basic shelf
- 4 x Low front shelf
- Fixing bracket set

## Module - LL2



- 1 x Basic shelf
- 4 x Drop front shelf
- Fixing bracket set

Manufacturer	Model	Vehicle length	Module size (mm)	Module - LL1	Module - LL2
Citroen / Fiat / Peugeot / Vauxhall	Relay (2012) / Ducato (2006) / Boxer (2012) / Movano (2021)	L2	1486 x 360 x 1500	<b>19526500.19V</b>	<b>19526501.19V</b>
Ford	Transit (2014)	L2 FWD / RWD	1374 x 360 x 1500	<b>19526400.19V</b>	<b>19526401.19V</b>
MAN / VW	TGE (2016) / Crafter (2016)	Standard FWD / RWD / MWB FWD / RWD	1486 x 360 x 1500	<b>19526500.19V</b>	<b>19526501.19V</b>
Mercedes	Sprinter (2018)	L2 FWD / RWD	1486 x 360 x 1500	<b>19526500.19V</b>	<b>19526501.19V</b>
Renault	Master (2010/2011)	M	1486 x 360 x 1500	<b>19526500.19V</b>	<b>19526501.19V</b>
Nissan	NV400 (Interstar) (2010/2011)	L2	1486 x 360 x 1500	<b>19526500.19V</b>	<b>19526501.19V</b>
Citroen / Fiat / Peugeot / Vauxhall	Relay (2012) / Ducato (2006) / Boxer (2012) / Movano (2021)	L3	1486 x 360 x 1500	<b>19526500.19V</b>	<b>19526501.19V</b>
Ford	Transit (2014)	L3 FWD / RWD	1486 x 360 x 1500	<b>19526500.19V</b>	<b>19526501.19V</b>
Renault	Master (2010/2011)	L FWD / RWD	1486 x 360 x 1500	<b>19526500.19V</b>	<b>19526501.19V</b>
Nissan	NV400 (Interstar) (2010/2011)	L3 FWD / RWD	1486 x 360 x 1500	<b>19526500.19V</b>	<b>19526501.19V</b>

# Modules - Large vans - Nearside/Left

## Module - LL3



- 1 x Worktop
- 2 x Low front shelf
- Fixing bracket set

Manufacturer	Model	Vehicle length	Module size (mm)	Module - LL3
Citroen / Fiat / Peugeot / Vauxhall	Relay (2012) / Ducato (2006) / Boxer (2012) / Movano (2021)	L2	1486 x 360 x 1000	<b>19526502.19V</b>
Ford	Transit (2014)	L2 FWD / RWD	1374 x 360 x 1000	<b>19526402.19V</b>
MAN / VW	TGE (2016) / Crafter (2016)	Standard FWD / RWD / MWB FWD / RWD	1486 x 360 x 1000	<b>19526502.19V</b>
Mercedes	Sprinter (2018)	L2 FWD / RWD	1486 x 360 x 1000	<b>19526502.19V</b>
Renault	Master (2010/2011)	M	1486 x 360 x 1000	<b>19526502.19V</b>
Nissan	NV400 (Interstar) (2010/2011)	L2	1486 x 360 x 1000	<b>19526502.19V</b>
Citroen / Fiat / Peugeot / Vauxhall	Relay (2012) / Ducato (2006) / Boxer (2012) / Movano (2021)	L3	1486 x 360 x 1000	<b>19526502.19V</b>
Ford	Transit (2014)	L3 FWD / RWD	1486 x 360 x 1000	<b>19526502.19V</b>
Renault	Master (2010/2011)	L FWD / RWD	1486 x 360 x 1000	<b>19526502.19V</b>
Nissan	NV400 (Interstar) (2010/2011)	L3 FWD / RWD	1486 x 360 x 1000	<b>19526502.19V</b>

# Modules - Large vans - Offside/Right

## Module - LR1



- 1 x Top tray
- 8 x Low front shelf
- Fixing bracket set

## Module - LR2



- 1 x Top tray
- 8 x Drop front shelf
- Fixing bracket set

Manufacturer	Model	Vehicle length	Module size (mm)	Module - LR1	Module - LR2
Citroen / Fiat / Peugeot / Vauxhall	Relay (2012) / Ducato (2006) / Boxer (2012) / Movano (2021)	L2	2606 x 360 x 1500	<b>19528700.19V</b>	<b>19528701.19V</b>
Ford	Transit (2014)	L2 FWD / RWD	2494 x 360 x 1500	<b>19528600.19V</b>	<b>19528601.19V</b>
MAN / VW	TGE (2016) / Crafter (2016)	Standard FWD / RWD / MWB FWD / RWD	2830 x 360 x 1500	<b>19528800.19V</b>	<b>19528801.19V</b>
Mercedes	Sprinter (2018)	L2 FWD / RWD	2942 x 360 x 1500	<b>19528900.19V</b>	<b>19528901.19V</b>
Renault	Master (2010/2011)	M	2606 x 360 x 1500	<b>19528700.19V</b>	<b>19528701.19V</b>
Nissan	NV400 (Interstar) (2010/2011)	L2	2606 x 360 x 1500	<b>19528700.19V</b>	<b>19528701.19V</b>
Citroen / Fiat / Peugeot / Vauxhall	Relay (2012) / Ducato (2006) / Boxer (2012) / Movano (2021)	L3	2942 x 360 x 1500	<b>19528900.19V</b>	<b>19528901.19V</b>
Ford	Transit (2014)	L3 FWD / RWD	2942 x 360 x 1500	<b>19528900.19V</b>	<b>19528901.19V</b>
Renault	Master (2010/2011)	L FWD / RWD	2942 x 360 x 1500	<b>19528900.19V</b>	<b>19528901.19V</b>
Nissan	NV400 (Interstar) (2010/2011)	L3 FWD / RWD	2942 x 360 x 1500	<b>19528900.19V</b>	<b>19528901.19V</b>

# Modules - Large vans - Offside/Right

## Module - LR3



- 1 x Top tray
- 6 x Low front shelf
- 4 x bott SYS3 Organizer L 89
- 4 x bott Systainer<sup>3</sup> SYS3 L 137
- 2 x bott Systainer<sup>3</sup> SYS3 L 187
- Fixing bracket set

## Module - LR4



- 1 x Top tray
- 6 x Low front shelf
- 6 x varioSlide-L with Anti-Slip Mat 5-3
- 2 x varioSlide-S with Anti-Slip Mat 5-3
- Fixing bracket set

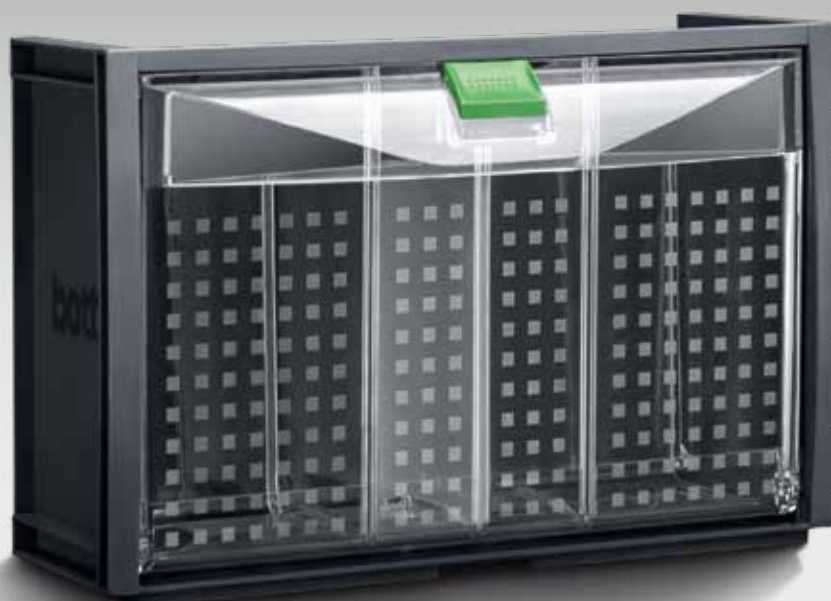
Manufacturer	Model	Vehicle length	Module size (mm)	Module - LR3	Module - LR4
Citroen / Fiat / Peugeot / Vauxhall	Relay (2012) / Ducato (2006) / Boxer (2012) / Movano (2021)	L2	2606 x 360 x 1500	<b>19528702.19V</b>	<b>19528703.19V</b>
Ford	Transit (2014)	L2 FWD / RWD	2494 x 360 x 1500	<b>19528602.19V</b>	<b>19528603.19V</b>
Renault	Master (2010/2011)	M	2606 x 360 x 1500	<b>19528702.19V</b>	<b>19528703.19V</b>
Nissan	NV400 (Interstar) (2010/2011)	L2	2606 x 360 x 1500	<b>19528702.19V</b>	<b>19528703.19V</b>

If your vehicle isn't listed please contact our team:

**[www.bott.com.sg](http://www.bott.com.sg)**







## Van racking accessories

- Efficient organisation is key when working from a vehicle. With our wide range of accessories, you can clearly arrange tools, equipment, consumables and small parts. From removable cases and boxes, to clever perforated storage for easy access, no space is wasted.
- Just as in choosing the right tools for the job, choosing the right storage accessories can help boost efficiency and productivity. You can find what you need more quickly, see when stocks are running low and protect valuable equipment from damage.
- For more information on the comprehensive range of accessories available, contact one of our team: **[www.bott.com.sg](http://www.bott.com.sg)**





## Trade team - consultation

For single trade vehicles to small business fleets, we offer a range of additional products & services, combined with expert advice and support.

We can advise on the best racking system for your trade, business or vehicle type and guidance on safety and legal compliance.

To help showcase your brand, we provide a full in-house vehicle wrapping service, including design, print and installation.

Our expert electrical team provide tailored solutions, such as lighting, auxiliary power and communication equipment.

For maximum storage space, we provide a range of light, stable and secure roof storage solutions. If required, we produce fully profiled floors, designed to integrate perfectly with our van racking systems.

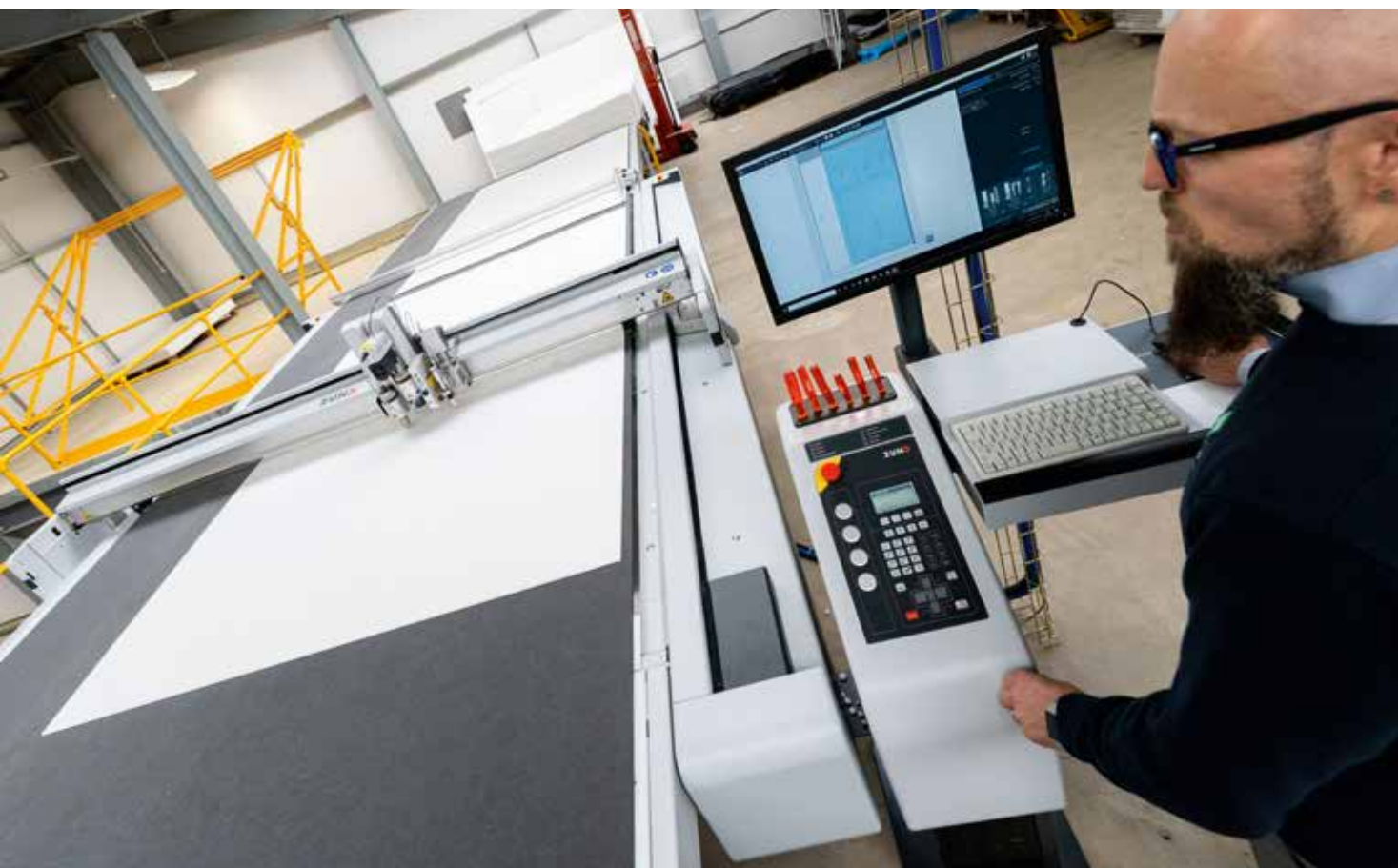




## Customer services

We invest the time at the front end of your conversion project to ensure that we have created the best design using compliant, reliable, tested and long lasting parts, meaning that we have minimal in-life issues to deal with. Nevertheless our support doesn't stop once we have delivered your converted vehicle and our after sales support team are second to none. We pride ourselves on customer loyalty and customer satisfaction is important to us.

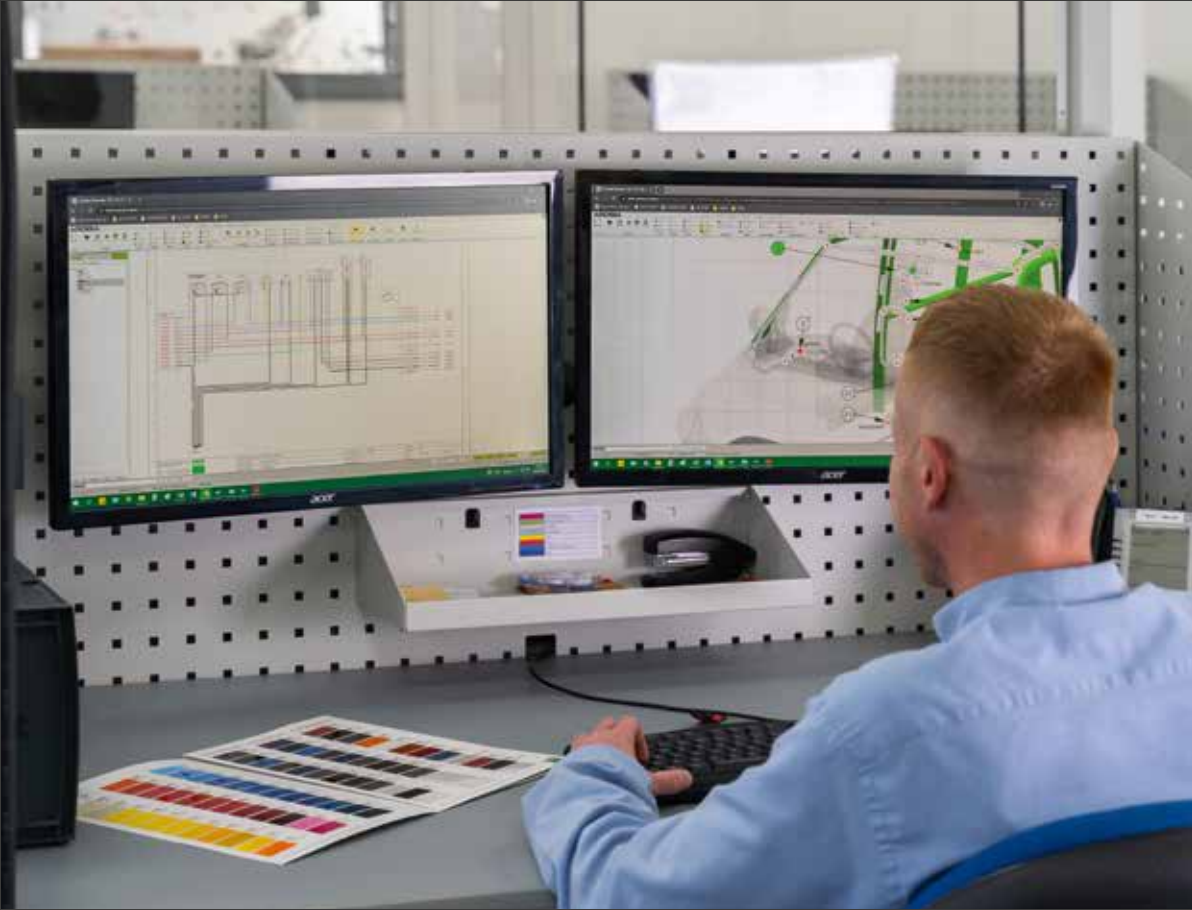




## Floors and linings

Vehicle specific floors and linings from bott protect the load space against damage in day to day use and help retain the value of your vehicle for the long term. We offer many different options of floors and linings. All of our products are robust, lightweight and provide maximum protection.

Fitting inner panelling protects the paint work and thus maintains the value of your commercial vehicle. Our side lining is available in various configurations; made of recyclable plastic or perforated aluminium sheet for use with bott accessories.







## Electrical services

Optimise the functionality of your vehicle. We provide integrated electrical accessories to allow you to perform your role effectively. A vehicle isn't just for transporting people and equipment; it's also a source of energy and charging capability to keep your kit working. As a stable platform for power, lighting, safety and control systems, we can make your vehicle work as hard as you.

We ensure that all electrotechnical installations are undertaken in line with current standards and legislation, and documented as necessary.

Ease of use, safety and protecting base vehicle systems are our top priorities, and as a NICEIC approved contractor, our work is regularly and externally audited. To ensure maximum reliability, we only use certified, high-quality components from partners and leading manufacturers.





## Decals

Having graphics on your vehicle is a great way to expand your brand reach and stand out from the crowd. Transforming them into an eye-catching advert is a quick, affordable and highly effective method of communicating with your target market.

We've invested heavily in the latest digital printing and design technology and our experienced team can advise you on all aspects of your van graphics design, including compliance with legislative requirements.

As our decal service is all in-house, when you've signed off your designs we take care of the rest. We pride ourselves on delivering vans which look great and help showcase your brand to potential customers every day.





## Security

Here at bott we're dedicated to helping you keep your vehicle and its contents safe and secure. We offer a complete range of practical security solutions for vans and light commercial vehicles. From slamlocks which ensure security from the moment your back is turned to electronic protection, alarms and the most rugged theft deterrents, our security solutions are proven both in test environments and in the field.







## **Binal International Pte Ltd**

10 Upp Aljunied Link #04-06  
Singapore 367904

Tel: +65 6281 5770

Fax: +65 6281 3367

Email: [sales@binal.com.sg](mailto:sales@binal.com.sg)

[www.bott.com.sg](http://www.bott.com.sg)